

Rediscover
the familiar.

Canon
FTb



FTb features set it apart from the crowd

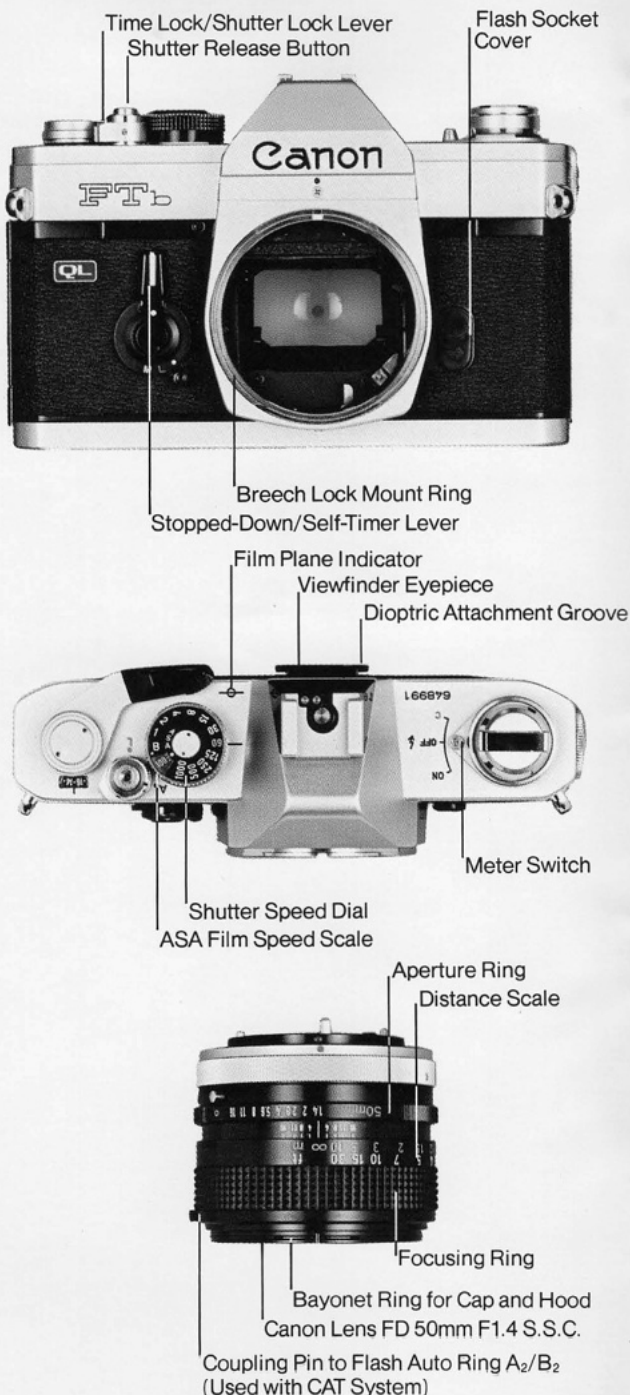
- 1.** Bright single-lens reflex viewing and focusing with the precision of through the lens metering, and total accuracy of composition, for complete control of any picture situation.
- 2.** Central area spot metering system measures only the central 12% of the viewfinder area, outlined by a shaded area in the finder. You know exactly what area you're metering.
- 3.** Superb Canon FD lenses available, from fisheye to super telephoto. Canon's Spectra and Super Spectra coatings and advanced optical designs give unprecedented definition and contrast.



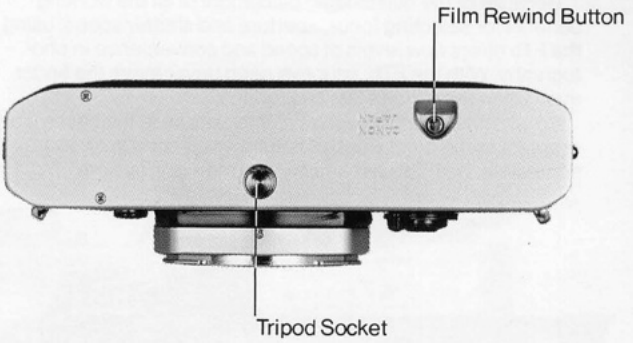
4. Viewfinder information includes shutter speed indicator, meter and aperture needle, metering range limit marks and warning when coupling range of meter is exceeded.
5. Canon Auto Tuning (CAT) system for fully automatic flash and exceptional flexibility in low light. Unlike conventional units, the CAT can't be fooled by variations in subject tone.
6. Booster accessory greatly expands low-light and macro capabilities by increasing meter sensitivity. Readings of $f/1.2$ at 15 seconds are possible with the Booster and ASA 100 film!



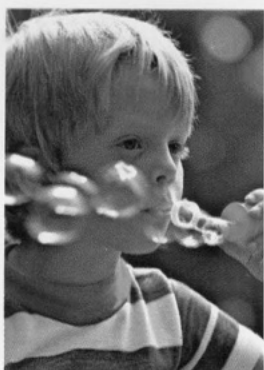
Nomenclature:



Controls and Features.



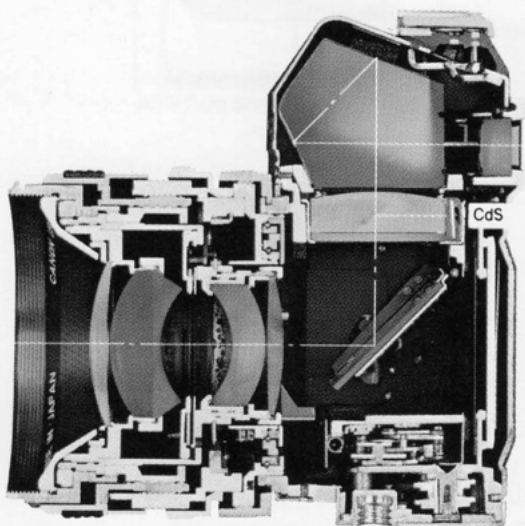
FTb Metering. QL Loading:



No matter what kind of light you're shooting in, the FTb can give you exposures that are right on target. It incorporates the type of through-the-lens metering system preferred by professionals, a central-area spot system. It reads only the central 12% of the viewfinder area—perfect for backlit situations which can confuse other types of metering systems. And the operation of the FTb's meter is simplicity itself—all you have to do for perfect exposures is center the needle!

Because of the outstanding placement of all the working controls for selecting focus, aperture and shutter speed, using the FTb offers new levels of speed and convenience in photography. With the FTb, your eye need never leave the finder, even when the action's fast and furious.

So whether your photographic interests lie in the hectic world of sports or the quiet world of nature, you'll soon grow to appreciate the FTb's remarkably fine metering system.



Fast and Foolproof.



Shutter Speed Indicator

Microprism Range finder

Central Metering Area

Metering Range Limit Mark

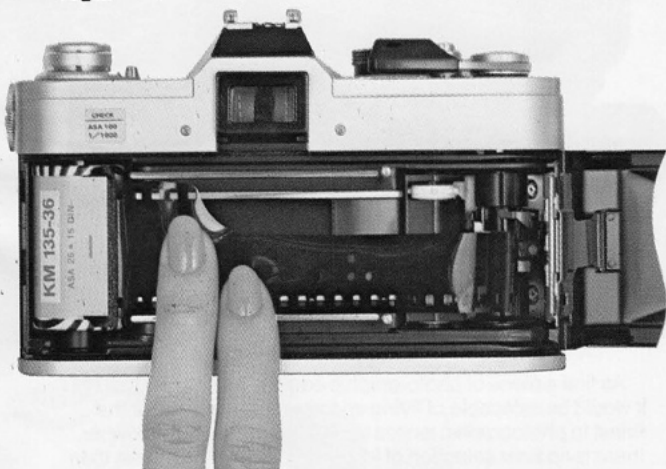
Meter Needle

Aperture Needle

Stopped-Down Metering Index Mark

Metering Range Limit Mark

QL



The FTb's unique QL (Quick Loading) System for fast film loading couldn't be easier or faster. To load, align the end of the leader with the QL index mark, close the camera and advance the film. Not only does this speed loading, but it prevents "lost" rolls due to improper loading technique.

Canon FD lenses:



As fine a piece of photographic equipment as the Canon FTb is, it would be incapable of living up to its potential without the finest in photographic lenses to go with it. For the FTb owner, there is no finer selection of lenses from which to choose than Canon's.

Canon's line of FD and FL Series lenses spans a range of focal lengths from 180° Fisheye to 1200mm Super Telephoto, with everything in-between. Canon has consistently been in the forefront in the design and production of their lenses, utilizing the latest developments in optical theory to produce optics which can truly be called "state of the art".

Clear. Sharp. Precise.



Because of the development of Canon's Spectra and Super Spectra Coatings, the entire line of lenses is perfectly matched in terms of color balance, and attains new levels of freedom from flare, contrast and color saturation.

The incorporation of the Floating System into many FD lenses vastly improves their definition at close-up distances. And because of this, you benefit because you own a lens that is fully sharp at ALL of its aperture and distance settings, not just a few.

Canon's Fluorite telephotos, containing artificial calcium fluoride elements, have set new standards in their focal lengths for quality and freedom from chromatic aberrations —with the added bonus of unusual compactness, a quality sought for and obtained throughout the entire line.



Low-Light Sensitivity.



The FTb Booster is a truly remarkable accessory. It's a snap to mount on the FTb, and when mounted, it vastly extends the camera's metering range, for photography either in extremely low light, or when using long bellows or extension tube extensions where, even though the light on the subject is great, the amount of falloff requires added meter sensitivity—and the FTb's got it with the Booster. The Booster is especially helpful when using color film, with its critical exposure latitude. It extends the FTb's metering range down to an incredible EV -3.5 , or $f/1.2$ at 15 seconds with ASA 100 film!

For photography in low light, macro photography or photomicrography, the FTb Booster is one of the most useful accessories you can buy.



Macro perfection.



The FTb has an extremely wide variety of close up equipment to draw from, from simple close up lenses and extension tubes to copying stands, bellows (two available) and microscope adapters. Thanks to the Floating System incorporated in many Canon FD lenses, they are well-suited to fine definition at close-up distances. For the true specialist, the FD 50mm f/3.5 SSC Macro lens and the FLM 100mm f/4 Bellows lens are unsurpassed in their ability to deliver a richness of detail that rivals the original subject, thanks to their special optical formulas.

In any application where outstanding photographs of small objects must be obtained, the FTb is a star performer—especially when used with the Booster.



Fast flash. Automatically.

Canon Auto Tuning (CAT) system for fully automatic flash incorporates the Canon Speedlite 133D used with a Flash Auto Ring for truly *unique* foolproof auto flash photography. It's foolproof because it operates on the basis of camera-to-subject distance, rather than on the basis of light being reflected back from the subject. For this reason, it gives perfect flash exposures when a hand or other object may come between the camera and subject (which would "fool" ordinary auto flash units) or when the subject's clothing is extremely light or dark — which can affect the exposure of an ordinary auto flash system, but not the CAT!



Canon accessories for any application.

Whatever job you're interested in now, or in the future, the Canon FTb is a camera you can stay with, thanks to Canon's well-conceived line of accessories. They'll help you with any photographic job with a professionalism that's distinctively Canon's.



- | | |
|-----------------------------|------------------------------------|
| 1. Angle Finder A2 | 14. Bellows FL |
| 2. Angle Finder B | 15. Finder Magnifier |
| 3. Canon Release 30 | 16. Lens Mount Converter A |
| 4. Canon Release 50 | 17. Lens Mount Converter B |
| 5. Extension Tubes 25-200mm | 18. Macrophoto Coupler FL55 |
| 6. Copy Stand 4 | 19. Macro Hood |
| 7. Microphoto Hood | 20. Extension Tube Set M |
| 8. Photomicro Unit F | 21. Macrophoto Coupler FL 48, 58 |
| 9. Handy Stand F | 22. Filters |
| 10. Attachment Ring | 23. Canon Speedlite 133D |
| 11. Camera Holder F2 | 24. Flash Auto Ring A ₂ |
| 12. Slide Duplicator | 25. Flash Auto Ring B ₂ |
| 13. Bellows M | |



Canon®

CANON INC.

11-28, Mita 3-chome, Minato-ku, Tokyo 108, Japan

U.S.A.

CANON U.S.A., INC. HEAD OFFICE

10 Nevada Drive, Lake Success, Long Island, N.Y. 11040, U.S.A.

CANON U.S.A., INC. MANHATTAN SERVICE STATION

600 Third Avenue, New York, N.Y. 10016, U.S.A.

CANON U.S.A., INC. ATLANTA SERVICE STATION

160 Peachtree Street, N.W. Atlanta, Georgia 30303, U.S.A.

CANON U.S.A., INC. CHICAGO OFFICE

140 Industrial Drive, Elmhurst, Illinois 60126, U.S.A.

CANON U.S.A., INC. LOS ANGELES OFFICE

123 Paularino Avenue East, Costa Mesa, California 92626, U.S.A.

CANON U.S.A., INC. LOS ANGELES SERVICE STATION

3407 West 6th Street, Los Angeles, California 90020, U.S.A.

CANON U.S.A., INC. SAN FRANCISCO

776 Market Street, San Francisco, California, 94102, U.S.A.

CANON U.S.A., INC. HONOLULU

Bldg. B-2, 1050 Ala Moana Boulevard, Honolulu, Hawaii 96814, U.S.A.

CANADA

CANON OPTICS & BUSINESS MACHINES CANADA, LTD. HEAD OFFICE

3245 American Drive, Mississauga, Ontario, L4V 1B8, Canada

CANON OPTICS & BUSINESS MACHINES CANADA, LTD. MONTREAL OFFICE

3070 Brabant-Marineau Street, St. Laurent, Quebec, H4S 1K7, Canada

CANON OPTICS & BUSINESS MACHINES CANADA, LTD. VANCOUVER OFFICE

735 Elmbridge Way, Richmond, B.C. V6X 1B8, Canada

EUROPE, AFRICA & MIDDLE EAST

CANON AMSTERDAM N.V.

Gebouw 70, Schiphol Oost, Holland

CENTRAL & SOUTH AMERICA

CANON LATIN AMERICA, INC. SALES DEPARTMENT

P.O. Box 7022, Panama 5, Rep. of Panama

CANON LATIN AMERICA, INC. REPAIR SERVICE CENTER

P.O. Box 2019, Colon Free Zone, Rep. of Panama

SOUTHEAST ASIA

CANON INC. HONG KONG BRANCH

5th Floor 2-6, Fui Yiu Kok Street, Tsuen Wan, New Territories, Hong Kong